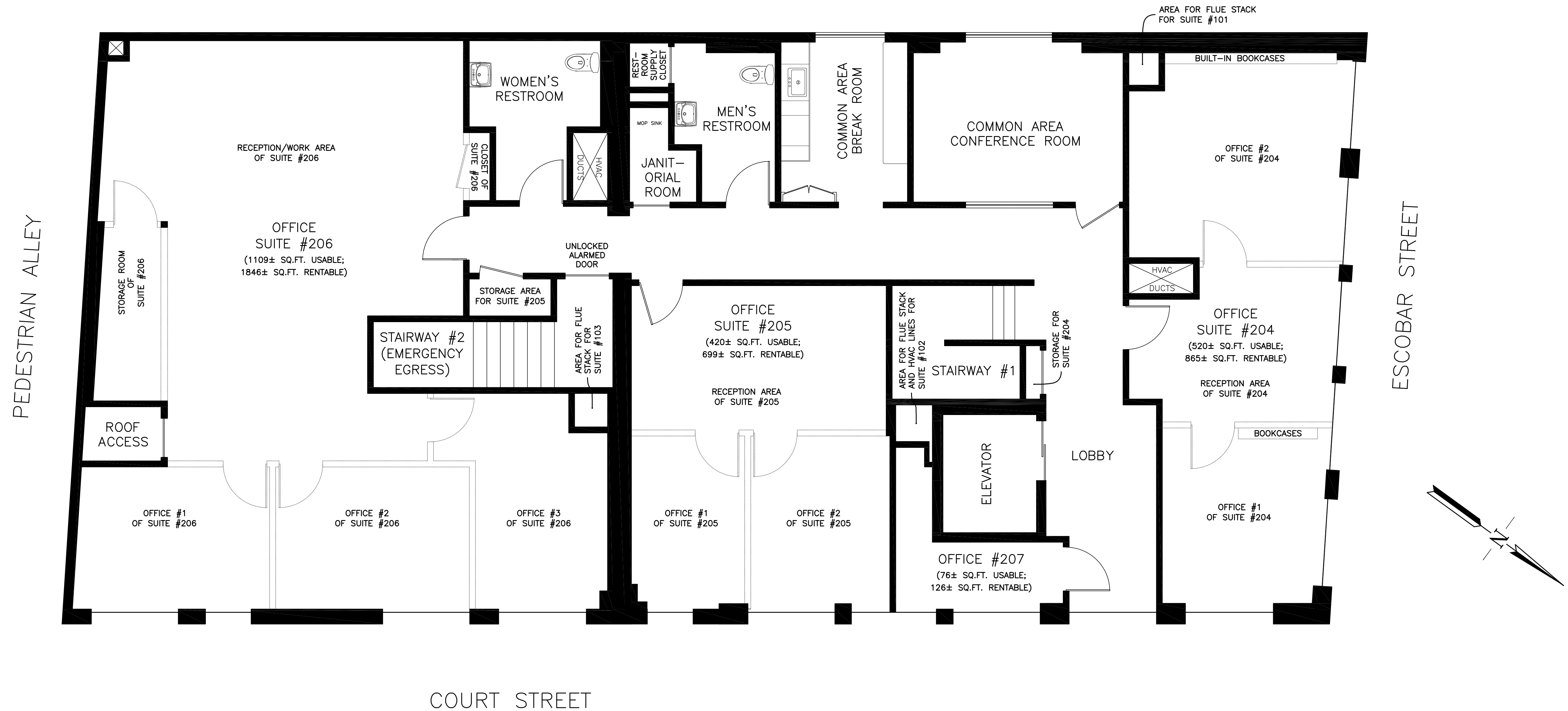


# 610 COURT STREET

## SECOND STORY FLOOR PLAN



NOTE: ALL SQUARE FOOTAGE FIGURES ARE PER BOMA 2010-A.

"SOUTHPORT LAND AND COMMERCIAL COMPANY" and "SOUTHPORT LAND" are Registered in U.S. Patent and Trademark Office.

© 2013-2023

**SOUTHPORT LAND AND COMMERCIAL COMPANY**  
 CALIFORNIA 94553-0997 (925) 372-7798  
 P.O. BOX 1997 INCORPORATED JUNE 15, 1861 MARTINEZ, CALIFORNIA'S OLDEST STOCK CORPORATION

JOB NO.	610-2
SCALE	N/A
DATE	1/30/23
REVISION NO.	06-C
DRAWING NO.	
SH OF	2 2