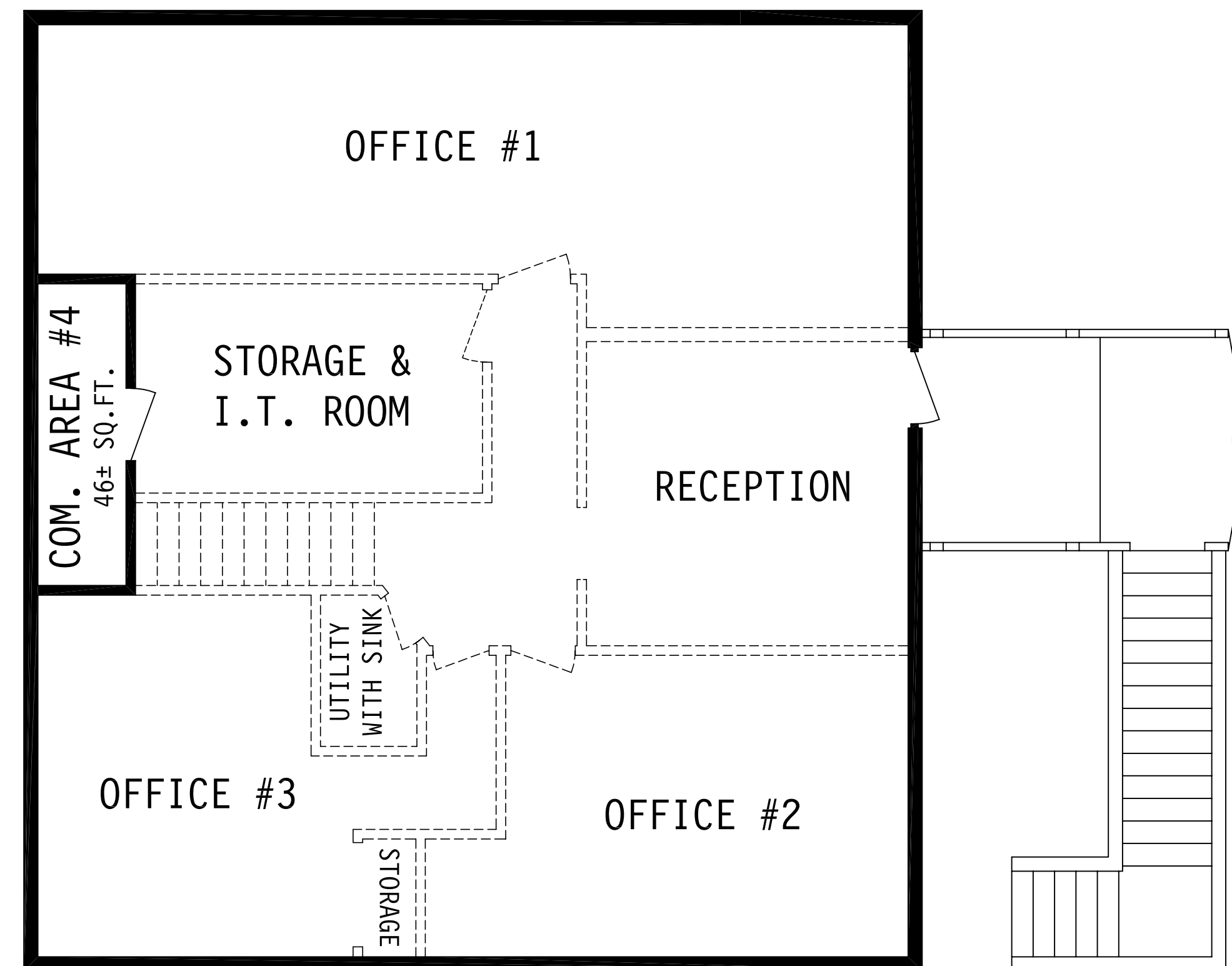


101 NORTH STATE STREET BUILDING

SECOND STORY FLOOR PLAN



COMMON AREA #1	141 SQ.FT.
COMMON AREA #2	54 SQ.FT.
COMMON AREA #3	19 SQ.FT.
COMMON AREA #4 (2nd Fl.) ..	46 SQ.FT.
TOTAL COMMON AREAS	260 SQ.FT.

NOTES:

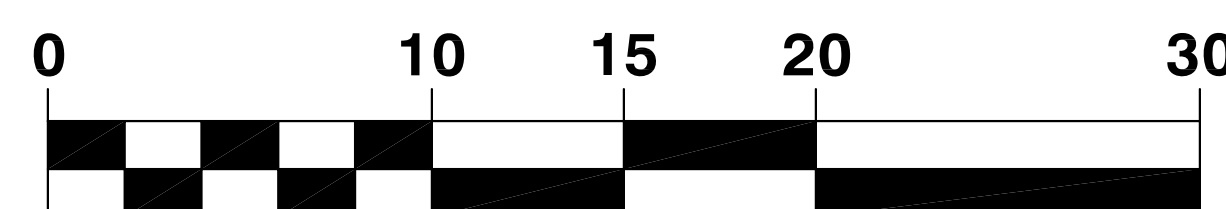
(1) ALL USABLE SQUARE FOOTAGE FIGURES INCLUDE INTERIOR WOODEN WALLS THAT COULD BE MOVED OR ELIMINATED IF NECESSARY DURING CONSTRUCTION OF TENANT IMPROVEMENTS.

(2) RENTABLE SQUARE FEET IS THE USABLE SQUARE FEET PLUS A PRO-RATA SHARE OF THE COMMON AREAS.

107 EAST PERKINS STREET
(ON SECOND FLOOR)

1,345± SQ.FT. USABLE
1,436± SQ.FT. RENTABLE

GRAPHIC SCALE IN FEET
(APPROXIMATE)



"SOUTHPORT LAND AND COMMERCIAL COMPANY" and "SOUTHPORT LAND" are Registered in U.S. Patent and Trademark Office.

© 2013

JOB NO.	UKH-2
SCALE	N/A
DATE	10/15/13
REVISION NO.	01B
DRAWING NO.	
SH	OF
1	1

107 East Perkins Street, Ukiah, CA

FLOOR PLAN DISCLAIMER AND ADVISORY:

The space at 107 East Perkins Street consists of a reception area, three offices, a large storage and I.T. room, and a janitorial closet with a sink. Restrooms are not shown on the floor plan, but are located on the first story, down the private interior stairway. The attached floor plan is based upon construction drawings and physical measurements.

Although Southport Land and Commercial Company attempts to provide accurate data on all of its floor plans, the scale of the floor plan is approximate and the floor plan is for illustrative purposes only. While we do not doubt the accuracy of our floor plans, we make no guarantee, warranty or representation as to the accuracy and completeness of any of our floor plans. You or your advisors should not rely upon our floor plan, but instead should conduct a careful, independent investigation of the property to determine to your satisfaction that the space you are considering leasing, and all common areas, will fit your requirements.